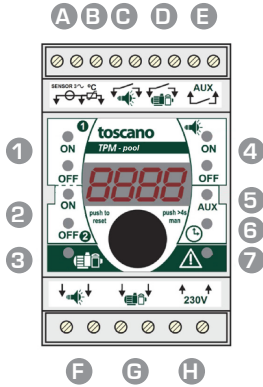


overview



Terminals

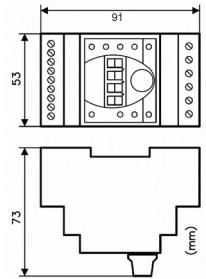
- A. Current transformer input (In>14A).
- B. Outside temperature sensor input.
- C. Lighting control input (on/off and RGB).
- D. Filtration control input.
- E. Auxiliary relay output.
- F. Lighting supply output.
- G. Pump supply output.
- H. Power supply 230V input.

Pilot lights

- 1. Filtration program 1.
- 2. Filtration program 2.
- 3. Filtration ON.
- 4. Lighting program.
- 5. Auxiliary relay.
- 6. Current time.
- 7. Alarm / Calibration.



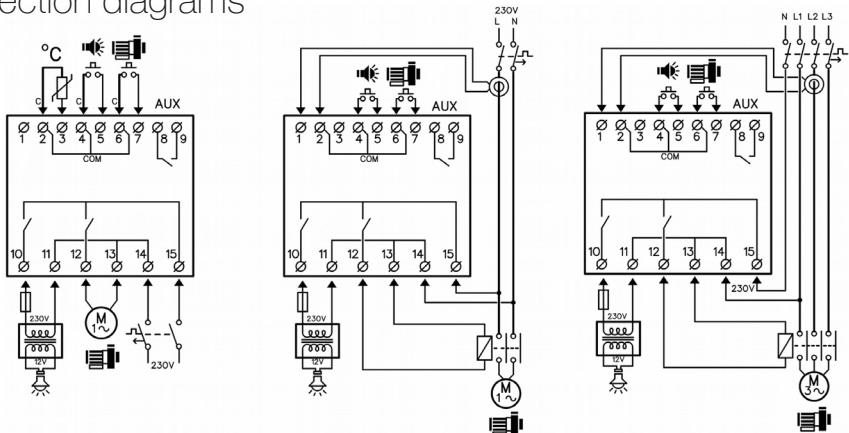
APP



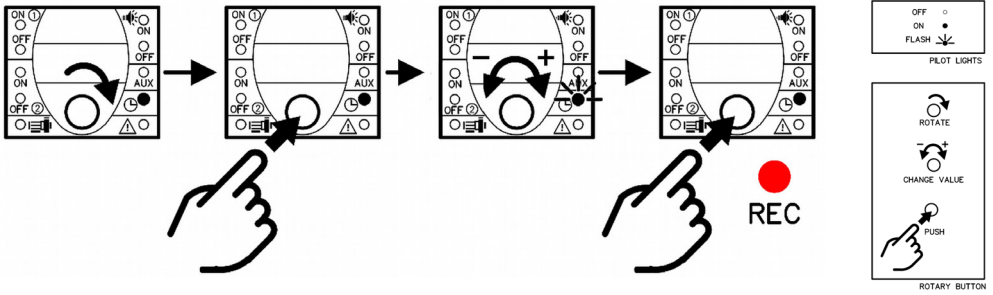
specifications

Power supply	230/400Vac - 50/60Hz
Pilot lights (LED)	Filtration ON, Alarm, Time programmers, Auxiliary output, Current time
Protections	Overload, Underload, Phase loss (three-phase pumps only)
Overload protection	10% over calibration test measured current
Underload protection	20% under calibration test measured current
Displayed information (4-digit LED display)	Current time, Time programmings, Alarms, Settings
Pump output	14A maximum (up to 20A with external contactor)
Lighting output	230V / 5A maximum
Auxiliary relay	Voltage-free (250V / 5A maximum)
Minimum pump current	0.6A
Maximum terminal cross-section	4mm ² [power] / 2,5mm ² [control]
Width/Weight/IP/Temperature	3 modules (52,5mm)/240g/IP20/-10°...+55°C, compatible with modular boxes
Options	Bluetooth interface, Radio remote control, Outside temperature sensor

connection diagrams

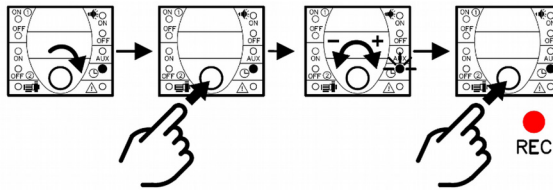


menu selection

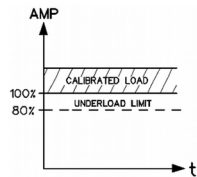
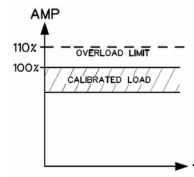
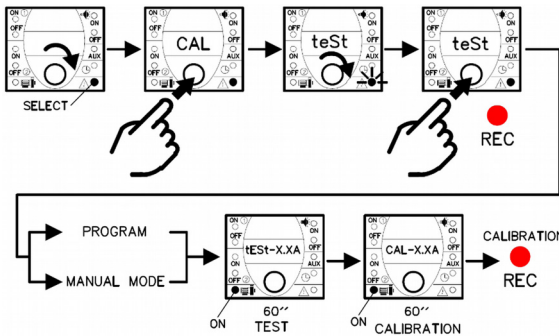


quick start (4 steps)

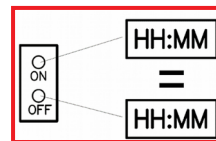
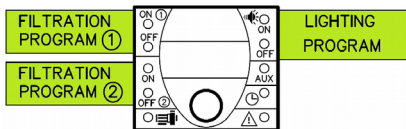
step 1: current time



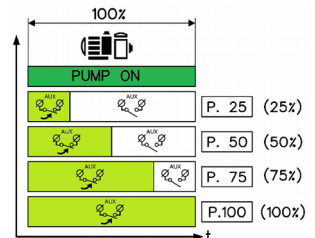
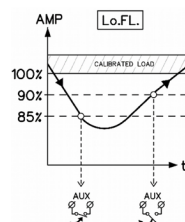
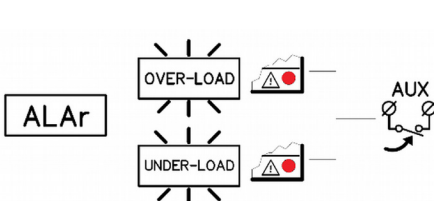
step 2: calibration test



step 3: filtration and lighting programs

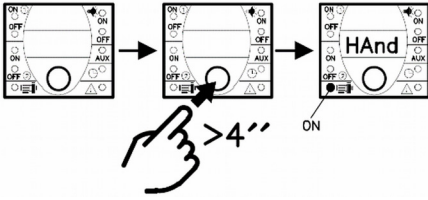


step 4: auxiliary relay (optional use)

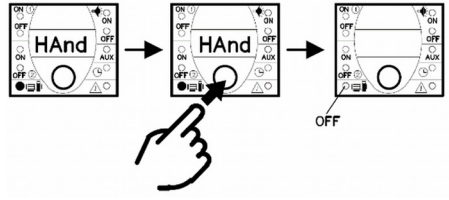


filtration control

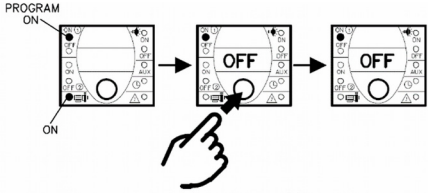
set manual mode



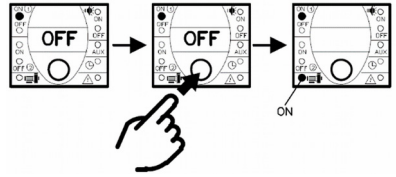
cancel manual mode



set filtration OFF mode

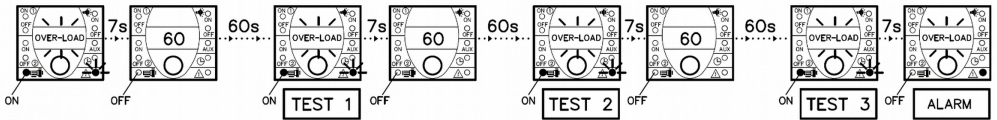


cancel filtration OFF mode

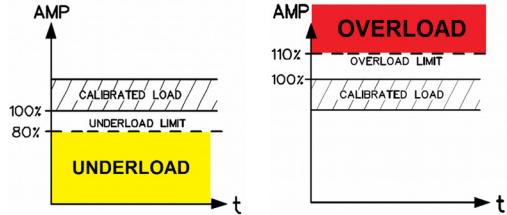
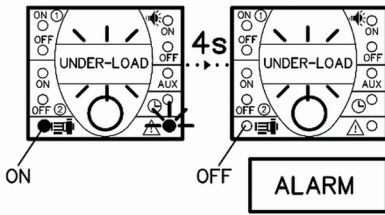


pump protection

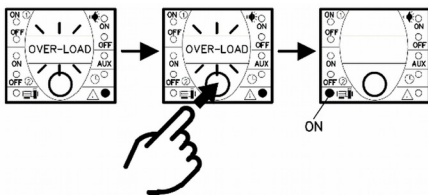
overload



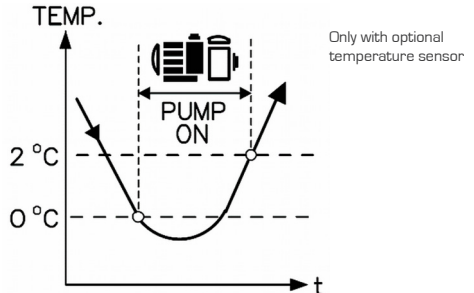
underload



reset

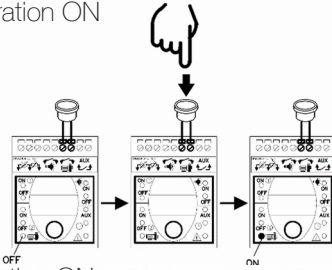


freeze protection

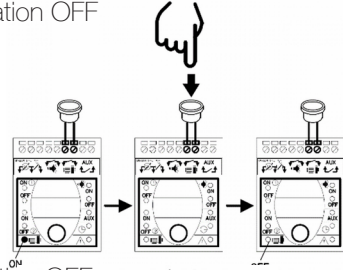


external control

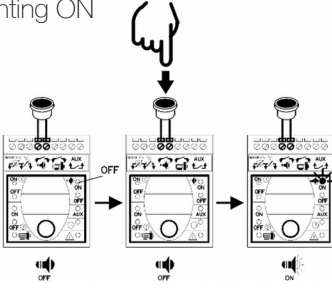
filtration ON



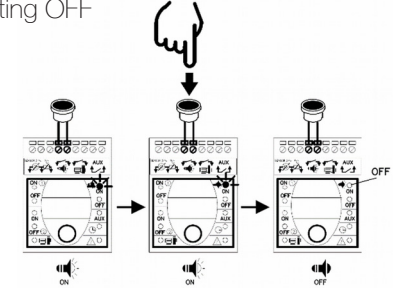
filtration OFF



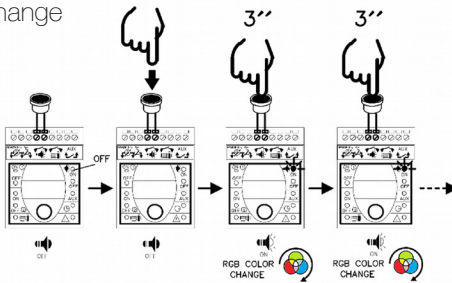
lighting ON



lighting OFF

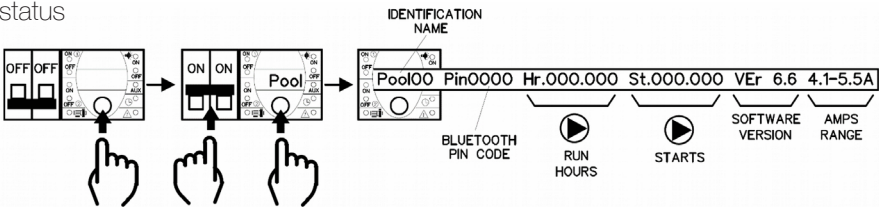


lighting - RGB color change



Bluetooth

status



new name and PIN

