

## Radio interference filter, single-phase, low leakage current **HLE 310**



### General Data

Rated voltage 250 Vac
Voltage range 0 - 250 Vac
Rated current 4 - 55 A
Leakage current <3.00 mA
Degree of protection IP 20

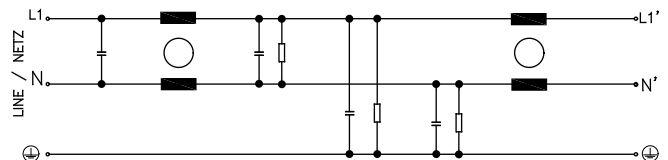
### Advantages

For enhanced requirements
Low leakage current
Single-stage filter concept
Efficient filter effect against line-bound interference emissions
Increase in the interference immunity of the connected consumer

### Applications

Radio interference suppression filter for line-side interference suppression of single devices, frequency converters or as group interference suppression.

### Sample application



### Standards

Radio interference suppression filter to DIN EN 60939-2

### Approvals **EAC**



Radio interference filter, single-phase,  
low leakage current  
**HLE 310**



Typ	HLE 310-230/4	HLE 310-230/8	HLE 310-230/12	HLE 310-230/16	HLE 310-230/20	HLE 310-230/25
<b>Electrical data</b>						
<b>Special features</b>						
Characteristics	Suitable for the medical field	Suitable for the medical field	Suitable for the medical field	Suitable for the medical field	Suitable for the medical field	Suitable for the medical field
<b>Operating data</b>						
Rated voltage	250 Vac	250 Vac	250 Vac	250 Vac	250 Vac	250 Vac
Voltage range	0 - 250 Vac	0 - 250 Vac	0 - 250 Vac	0 - 250 Vac	0 - 250 Vac	0 - 250 Vac
Rated current	4 A	8 A	12 A	16 A	20 A	25 A
Leakage current (50 Hz)*	<3.00 mA	<3.00 mA	<3.00 mA	<3.00 mA	<3.00 mA	<3.00 mA
Rated frequency	50 - 60 Hz	50 - 60 Hz	50 - 60 Hz	50 - 60 Hz	50 - 60 Hz	50 - 60 Hz
Overrating Capacity	150 %, shortly	150 %, shortly	150 %, shortly	150 %, shortly	150 %, shortly	150 %, shortly
<b>Environment</b>						
Climatic category	25/085/21 [in accordance with EN 60068-1]	25/085/21 [in accordance with EN 60068-1]	25/085/21 [in accordance with EN 60068-1]	25/085/21 [in accordance with EN 60068-1]	25/085/21 [in accordance with EN 60068-1]	25/085/21 [in accordance with EN 60068-1]
Ambient temperature max.	50 °C	50 °C	50 °C	50 °C	50 °C	50 °C
<b>Safety and protection</b>						
Type	Metal enclosure	Metal enclosure	Metal enclosure	Metal enclosure	Metal enclosure	Metal enclosure
Protection index	IP 20	IP 20	IP 20	IP 20	IP 20	IP 20
Safety class (prepared)	I	I	I	I	I	I
Test voltage	1700 Vdc Phase/Phase, 2700 Vdc Phase/PE	1700 Vdc Phase/Phase, 2700 Vdc Phase/PE	1700 Vdc Phase/Phase, 2700 Vdc Phase/PE	1700 Vdc Phase/Phase, 2700 Vdc Phase/PE	1700 Vdc Phase/Phase, 2700 Vdc Phase/PE	1700 Vdc Phase/Phase, 2700 Vdc Phase/PE
<b>Notes</b>						
*	Leakage current measured against the maximum permissible input voltage fluctuation in accordance with IEC 38 ±10 %	Leakage current measured against the maximum permissible input voltage fluctuation in accordance with IEC 38 ±10 %	Leakage current measured against the maximum permissible input voltage fluctuation in accordance with IEC 38 ±10 %	Leakage current measured against the maximum permissible input voltage fluctuation in accordance with IEC 38 ±10 %	Leakage current measured against the maximum permissible input voltage fluctuation in accordance with IEC 38 ±10 %	Leakage current measured against the maximum permissible input voltage fluctuation in accordance with IEC 38 ±10 %
<b>Order numbers</b>						
<b>Order Number</b>	<b>HLE 310-230/4</b>	<b>HLE 310-230/8</b>	<b>HLE 310-230/12</b>	<b>HLE 310-230/16</b>	<b>HLE 310-230/20</b>	<b>HLE 310-230/25</b>

1.1

1.2

1.3

2.1

2.2

3.1

3.2

3.3

4.0

5.1

5.2

# 3 Reactors / EMI filters

## Single-phase radio interference suppression filters



### Radio interference filter, single-phase, low leakage current **HLE 310**



Typ		HLE 310-230/30	HLE 310-230/42	HLE 310-230/55
Electrical data	Special features			
	Characteristics	Suitable for the medical field	Suitable for the medical field	Suitable for the medical field
	Operating data			
	Rated voltage	250 Vac	250 Vac	250 Vac
	Voltage range	0 - 250 Vac	0 - 250 Vac	0 - 250 Vac
	Rated current	30 A	42 A	55 A
	Leakage current (50 Hz)*	<3.00 mA	<3.00 mA	<3.00 mA
	Rated frequency	50 - 60 Hz	50 - 60 Hz	50 - 60 Hz
	Overrating Capacity	150 %, shortly	150 %, shortly	150 %, shortly
	Environment			
	Climatic category	25/085/21 [in accordance with EN 60068-11]	25/085/21 [in accordance with EN 60068-11]	25/085/21 [in accordance with EN 60068-11]
	Ambient temperature max.	50 °C	50 °C	50 °C
	Safety and protection			
	Type	Metal enclosure	Metal enclosure	Metal enclosure
	Protection index	IP 20	IP 20	IP 20
Safety class (prepared)	I	I	I	
Test voltage	1700 Vdc Phase/Phase, 2700 Vdc Phase/PE	1700 Vdc Phase/Phase, 2700 Vdc Phase/PE	1700 Vdc Phase/Phase, 2700 Vdc Phase/PE	
Notes				
*	Leakage current measured against the maximum permissible input voltage fluctuation in accordance with IEC 38 ±10 %	Leakage current measured against the maximum permissible input voltage fluctuation in accordance with IEC 38 ±10 %	Leakage current measured against the maximum permissible input voltage fluctuation in accordance with IEC 38 ±10 %	
Order numbers				
Order Number	<b>HLE 310-230/30</b>	<b>HLE 310-230/42</b>	<b>HLE 310-230/55</b>	



Radio interference filter, single-phase,  
low leakage current  
**HLE 310**



Typ	Fixing screws	Connections phase	Connections PE	Fixing method	Weight	Dimension picture (in mm)								
							A	B	C	D	E	F	G	H
HLE 310-230/4	M5	Screw clamp, 4 mm <sup>2</sup>	Bolt, M5	Mounting lugs	0.52 kg	1	160	38	75	-	19	136	150	5.5
HLE 310-230/8	M5	Screw clamp, 4 mm <sup>2</sup>	Bolt, M5	Mounting lugs	0.58 kg	2	160	38	75	-	19	136	150	5.5
HLE 310-230/12	M5	Screw clamp, 4 mm <sup>2</sup>	Bolt, M5	Mounting lugs	0.78 kg	3	190	38	75	-	19	166	180	5.5
HLE 310-230/16	M5	Screw clamp, 4 mm <sup>2</sup>	Bolt, M5	Mounting lugs	0.78 kg	4	190	38	75	-	19	166	180	5.5
HLE 310-230/20	M5	Screw clamp, 4 mm <sup>2</sup>	Bolt, M5	Mounting lugs	0.80 kg	5	190	38	75	-	19	166	180	5.5
HLE 310-230/25	M6	Screw clamp, 10 mm <sup>2</sup>	Bolt, M6	Mounting lugs	1.30 kg	6	230	50	95	25	12.5	200	215	5.5
HLE 310-230/30	M6	Screw clamp, 10 mm <sup>2</sup>	Bolt, M6	Mounting lugs	1.35 kg	7	230	50	95	25	12.5	200	215	5.5
HLE 310-230/42	M6	Screw clamp, 10 mm <sup>2</sup>	Bolt, M6	Mounting lugs	1.45 kg	8	230	50	95	25	12.5	200	215	5.5
HLE 310-230/55	M6	Screw clamp, 16 mm <sup>2</sup>	Bolt, M6	Mounting lugs	2.00 kg	9	225	85	95	60	12.5	230	210	5.5

Dimension pictures

